



The ultimate engraving software solution.

NEW

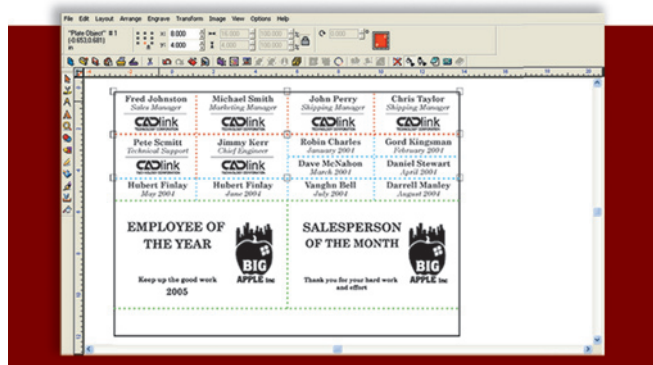
The number **ONE** engraving software just got even better....

The proof is in the numbers. 100's of engraving-specific features that have been developed based on feedback from 1000's of users worldwide. See why EngraveLab has the world's largest installed user base across rotary and laser engravers. This list includes just some of our customer's favorite features.

### Badges and Serialization

#### *The EngraveLab advantage*

Reduce layout and design time by automatically laying out anywhere from a few to 1000's of templates that utilize the same design but require text or numeric substitutions. This easy to use, variable data replacement tool is ideal for name plates, door plates, just about anything when you have lot's to do!



WYSIWYG text composition with 1100 fonts 5000+ clipart (inc. 100+ specialty engraving fonts)

#### *The EngraveLab advantage*

On screen text preview with easy access to text properties (font style, height, kerning, etc.) Easily fit text to shape or elaborate path. Font and clipart library provides artwork that is engrave-ready and single or multi-line engraving fonts.



### Automated Braille translation

#### *The EngraveLab advantage*

Grade 2 (Contracted) and Grade 1 braille foreign language support converted from text with a single click of the mouse. Easily badge Braille text. For supported drivers, the Braille drill tool will automatically locate Braille dots and drill each to a specific depth.



### 3D Engraving

#### *The EngraveLab advantage*

Add a new dimension to your existing engraving business with complete 3D functionality for your z axis engraver. Create hand carved looking signs with our unique 3D cut path generator.



SAVE COUNTLESS HOURS USING SPECIFIC DESIGN AND PRODUCTION FEATURES

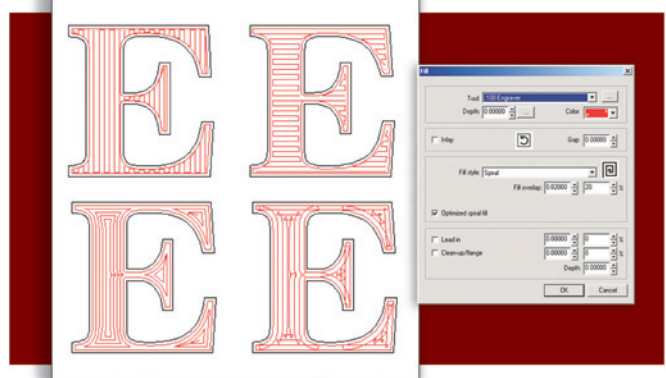
[www.engravelab.com](http://www.engravelab.com) 877-247-0888

**GO FASTER, WHILE REDUCING AND RE-USING materials saving you production costs and adding to your bottom line.**

### Efficient fill routines (now even faster)

#### *The EngraveLab advantage*

Historically always a strength for EngraveLab, our developers have made these routines 2 times faster than they were! Automated fill routines include s-sweep, line sweep, spiral and island fills. Apply multiple fill routines to a single job. Use EngraveLab's powerful sorting options and reduce engraving time, and preview cutter diameter right on your screen.



### Automated proofs via E-mail

#### *The EngraveLab advantage*

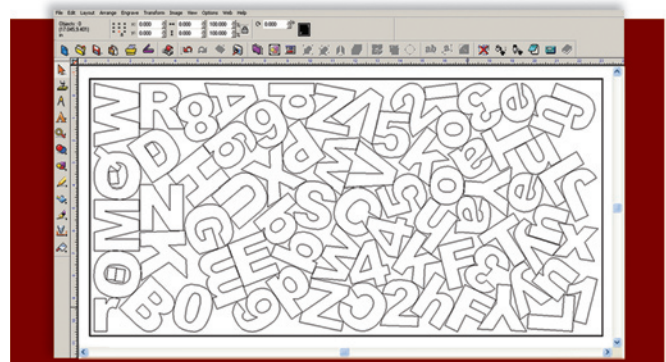
Save travel time and improve your turn around time for customer proofs by automatically sending .pdf job proofs from EngraveLab. Add all job notes dimensions, etc in a professional looking custom proof template you create for your shop.



### Shape nesting

#### *The EngraveLab advantage*

Utilize costly materials right down to the last square inch. EngraveLab's intelligent automated nesting will group jobs (odd shapes, lettering, etc) onto the substrate and save you substantial production costs.



### Vectorization Wizard. Convert scanned or bitmap images into vector artwork

#### *The EngraveLab advantage*

Vectorize black and white or full color graphics quickly and easily. Transform difficult artwork into vectors that are cleanly cut. Save time and money by doing it yourself rather than sending it out!



### Laser and rotary engraver support in a single design and production software program

#### *The EngraveLab advantage*

Why use multiple design programs and multiple software packages to run your engravers? Lessen, your learning curve, your staff's learning curve by optimizing your business into a single software workflow for all your jobs. Isn't it easier to be an expert in a single package that does it all as opposed to jumping from software to software that you are only marginally familiar with?



[www.engravelab.com](http://www.engravelab.com)

877-247-0888

For sales information contact:  
[engravelab@cadlink.com](mailto:engravelab@cadlink.com)

United States:

500 Main Street Clinton, MA 01501

Tel: 877-247-0888 Fax: 978-368-3354

Canada:

2440 Don Reid Drive, Ottawa, ON K1H 1E1

Tel 613-247-0850 Fax: 613-247-1488

Europe:

Intech House Wilbury Way,  
Hitchin, Herts, U.K. SG4 OTW

Tel: ++ 44 (0) 1462-420222 Fax: ++ 44 (0) 1462-420111



EngraveLab is a registered trademark of  
CADlink Technology Corporation